

## KAILASH MANSAROVAR YATRA EX-LUCKNOW

INNOVATRIP VOYAGES PVT LTD presents KAILASH MANSAROBAR YATRA – partnered with government-based, high rated and Kathmandu based experienced kailash Mansarovar Yatra Operator.

Please find below complete details of the 10 days **Kailash Mansarovar Yatra by Helicopter in 2025 from Lucknow**. Due to the quality concern and best possible service offering, we do operate on a small group size (10-20 people) with limited seats on our scheduled departure dates. So, we request you to let us know your decision as early as possible. Your early confirmation will help us to arrange a trip timely with all needful related arrangements.

### Kailash Mansarovar Yatra Facts:

<b>Trip Duration:</b>	09 Nights   10Days
<b>Trip Name:</b>	Kailash Mansarovar Yatra (KMY) by Helicopter from Lucknow
<b>Starting point:</b>	Lucknow, India
<b>Ending point:</b>	Lucknow, India
<b>Mt. Kailash height:</b>	6,638 meters from sea level
<b>Highest point on trek:</b>	Dolmala Pass (5,600meters)
<b>Best Months :</b>	May to September

## Package Cost:

Group Size:	20 People(Luxury Package)
Package Cost	INR 2,76,000/-Per Person + 5% GST + 5% TCS
Tax and Fees	All Included

## Kailash Mansarovar Yatra by Helicopter from Lucknow Dates:

Travel Month	Kathmandu Arrival
June	<ul style="list-style-type: none"> <li>07 June (Full Moon Date - 11 June)</li> </ul>
	<ul style="list-style-type: none"> <li>20 June</li> </ul>
July	<ul style="list-style-type: none"> <li>06 July (Full Moon Date - 10 July)</li> </ul>
	<ul style="list-style-type: none"> <li>18 July</li> </ul>
August	<ul style="list-style-type: none"> <li>05 August (Full Moon Date - 09 August)</li> </ul>
	<ul style="list-style-type: none"> <li>15 Aug</li> </ul>
	<ul style="list-style-type: none"> <li>22 Aug</li> </ul>

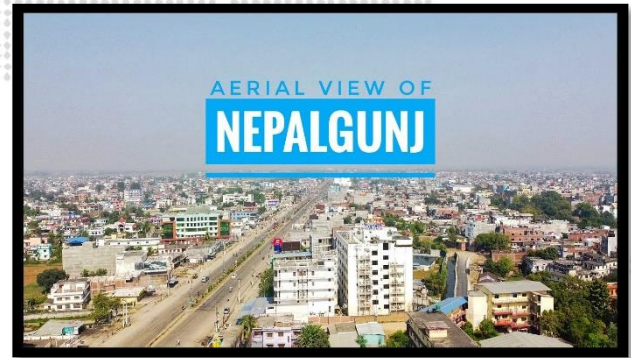
September	<ul style="list-style-type: none"> <li>03 Sep (Full Moon Date - 07 Sep)</li> </ul>
	<ul style="list-style-type: none"> <li>12 Sep</li> </ul>

## Your Trip Itinerary:

### Day 01: Lucknow Arrival, Transfer to Nepalgunj.

**Your Arrival Time** Our office representative will meet and greet you at Lucknow airport and drive you toward Nepalgunj which takes around 4 hours. And your flight should reach Lucknow before 2 PM.

**At. 06:00 PM:** We will meet for a trip briefing about your tour program. If you are arriving late (after 4 PM) then we will have a briefing on next morning. You can ask all your related questions during the trip briefing meeting.



**Note:** The visa application procedure is to be completed in Delhi beforehand. We will ask you for the necessary documents to apply for the visa.

**Meal:** Dinner Included.

**Hotel:** Soaltee Westend Premier or Similar (5 Star).





## Day 02: Fly from Nepalgunj to Simikot. (2910m)

**At. 08:00 AM:** Early morning after breakfast, our vehicle will pick you up from the hotel to Nepalgunj airport to catch the flight to Simikot. The flight time is about 1 hour. Simikot (2971m) is the district headquarters of Humla, a mountain district of Nepal. At Simikot you will walk up to your hotel. Once you reach there, you will spend the rest of the day there to acclimatize; and if you have a little more time, you will do a short hike around in Simikot.



Simikot

**Meals:** Breakfast, Lunch and Dinner Included.

**Hotel:** Local Guest House.

**Altitude :** 2971 m.

## Day 03: Simikot - Hilsa - Taklakot. (3880 m)

**At. 08:00 AM:** After breakfast, you will walk to Simikot airport and take a helicopter to Hilsa. It takes 20 minutes of flight time to reach Hilsa. You will see the scenic view of green hills and snow-capped mountains along with the deep river gorge of River Karnali from the helicopter. Once you reach Hilsa, after a 30 minute walk from there, you will reach the immigration office and complete your immigration procedures. Our vehicle will be waiting for us on the Tibet side. Then, a 30 minute drive from the border will take you to Taklakot/Purang (3880 m).



Hilsa



**Meals:** Breakfast, Lunch and Dinner Included.

**Hotel:** Local Guest House.

**Distance covered:** 26 KM.

**Altitude :** 3880 m.

## Day 04: At Taklakot – Rest Day – A leisure day for Acclimatization.

This day is designed for rest and acclimatization to adjust to the high altitude, ensuring you are physically prepared for the upcoming trek. Taklakot also known as Purang town at an altitude of 3880 m serves as a great acclimatizing point in this yatra for you. Enjoy a warm breakfast and you can take a leisurely stroll around the Taklakot market. After lunch, you can also walk around nearby areas to familiarize your body with the altitude.



Taklakot

**Meals:** Breakfast, Lunch and Dinner Included.

**Hotel:** Local Guest House.

**Altitude :** 3880 m.



## Day 05: Drive from Taklakot to Lake Mansarovar.(4650 m)

**At. 07:00 AM:** After breakfast, you'll drive from Taklakot to the sacred Lake Mansarovar (4650 m), covering approximately 70 KM through the breathtaking Tibetan landscapes. In about 30-45 minutes of ride, you slowly approach Lake Mansarovar, where you will also notice Rakshas Taal on the other side. Upon arrival, marvel at the pristine blue waters of the lake, revered across multiple spiritual traditions, with the majestic Mount Kailash in the backdrop. Overnight at a local guest house.



Mansarovar

**Meals:** Breakfast, Lunch and Dinner Included.

**Hotel:** Local Guest House.

**Distance covered:** 110 KM.

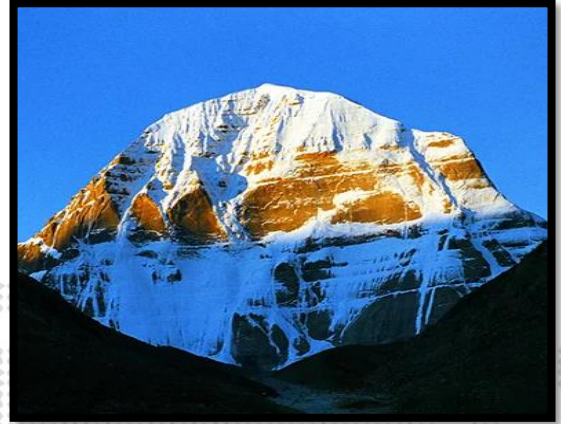
**Altitude:** 4650 m.





## Day 06: Drive to Yama Dwara Trek to Derupuk.(4700 m) - 12 KM

**At. 07:00 AM:** Today you can perform Puja/ Havan at the shore of Lake Manasarovar. After breakfast, drive through Darchen to get to Yama Dwara. **Darchen**, which is 35 KM from Mansarovar, takes around 1 and a half hours to drive. After reaching Darchen, you will further drive towards **Yamadwar (Tarboche)** which is the starting point of Kailash Parikrama. Passing through the gate of Yamadwar is believed to remove your evil deed from the book of judgment, and you will get a place in heaven.



Derapuk

Your stop today will be at Derapuk, which is about a 10-12 KM trek from Yamadwar. You will walk along the beautiful rocky cliffs and waterfalls with some clouds in the clear blue sky, which makes you feel the omnipotence of Lord Shiva with tons of blessings. As you walk on, time and again, the north face of Kailash Parbat will keep appearing. Once you reach there you can rest your bags and relax. Overnight at the guest house at Derapuk.

**Note:** If you are not doing Parikrama, then you will be waiting at Darchen till the group returns from Parikrama, with arrangements for accommodation and meals.

**Meals:** Breakfast, Lunch and Dinner Included.

**Hotel:** Local 3 Star Hotel (Available Best).

**Distance covered:** 35 KM.

**Altitude:** 4700 m.

**Darchen** is a small village/town located at an altitude of 4700 m, which is a significant gateway to Kailash Yatra. It is the starting and ending point for the pilgrimage circumambulation (Kora) around Mount Kailash. The village itself is a small but important

*hub for pilgrims and travelers visiting the region. The vibrant market in this town hosts various restaurants serving basic Tibetan fare, hotels and guesthouses for accommodation, and shops selling supplies for the trek.*



Darchen Village

**Yama Dwar**, also known as Tarboche in Tibetan, is a gateway located near Mount Kailash. It literally translates to "Gateway of Death" as "Yam" refers to Yama, the Hindu God of Death, and "Dwar" means gate. It is considered an auspicious place and the main starting point for the spiritual circumambulation (parikrama) around Mount Kailash. Passing through the Yam Dwar signifies leaving behind worldly attachments and joining on a journey of spiritual purification.



Yama Dwar





## Day 07: Trek to Zuthulphuk. (4800 m) (22 KM )

**At. 07:00 AM:** After breakfast, we trek to the east face of **Dolma La (Pass at 5,600 m)** and then descend gradually to **Zuthulphuk (4800 m)**. By late afternoon, you will arrive in Zuthulphuk- the cave of miracles. The great ascetic Milerappa is supposed to have performed miracles here. Overnight at the guest house in Zuthulphuk.



Zuthulphuk

**Meals:** Breakfast, Packed Lunch and Dinner Included.

**Hotel:** Local Guest House (we don't have any choice here).

**Distance covered:** 22 KM.

**Altitude:** 5600 m.

**Nandi Parbat** is a mountain peak located near Mount Kailash in the Himalayas, with an altitude of It is considered a sacred place in Hinduism and is named after Nandi, the sacred bull who is the mount (vahan) of Lord Shiva. The mountain's shape is said to resemble that of a bull. It is also believed that Nandi, the bull, acts as a gatekeeper or intermediary between devotees and Lord Shiva.



Nandi Parbat



**Gauri Kunda** is a sacred lake located at the foot of Mount Kailash in Tibet at an altitude of approximately 5600m. It is a revered place in Hinduism and Buddhism where Goddess Parvati used to bathe. It is believed that the waters of the kund are purified by her touch and thus possess immense spiritual power. It can be seen on the way down towards Zuthulpuk.



Gauri Kunda

## Day 08: Zutulphuk to Hilsa or Simikot. (8 KMTrek)

After early morning breakfast, you will walk 3 hours to catch the vehicle which will take you to the Nepal border. Our staff will prepare lunch in Darchen (on the way to Hilsa). After lunch, you will continue to drive to the Nepal border. We will make immigration procedures to exit Tibet and do a short walk to Hilsa on the Nepal side. If you reach early and are able to catch a helicopter, you will fly down to Simikot otherwise you will need to stay in Hilsa.



Simikot

**Hilsa Altitude :** 3640M

**Meals:** Breakfast, Lunch and Dinner Included.

**Hotel:** Local Guest House

---

## Day 09: Hilsa to Simikot, fly to Nepalgunj.

If you stayed in Hilsa the previous day then you have to take an early morning Heli flight to Simikot. Instantly you will catch another flight to Nepalgunj. Our representative will pick you from Nepalgunj airport and take you to the hotel in Nepalgunj, where you will have lunch and take a rest .

At. 4:00 PM: Later in the evening, you can go for an exploration around the local markets, or enjoy the in-house facilities of the hotel and later come back for dinner.



Nepalgunj

**Meals:** Breakfast, Lunch and Dinner Included.

**Hotel:** Soaltee Westend Premier or Similar (5 Star).



## **Day 10: Transfer to Lucknow.**

*Our vehicle will take you to the Lucknow airport nearly 2 hours before your scheduled flight. The time taken from Nepalgunj to the airport is around 4 hours. So you'll need to get ready 6 hours ahead of your flight time. We assure you that you will get back to your home with the amazing holy experience of Kailash Manasarovar and Nepal. We hope you will enjoy the holy tour and are sure that you will be back for the next pilgrimage tour somewhere in the Himalayas again. If anyone would like to go to Muktinath then the itinerary will be added as per the route.*

**Note:** *If you are flying out from Lucknow, you must schedule your flight after 1 PM. Or else you can stay one night in Lucknow on your own.*

**Meals:** *Breakfast Included.*

---

### **Package Cost Includes:**

1. *Arrival and departure transfers from Lucknow airport to Nepalgunj.*
2. *All (2 Nights) hotel accommodation in Nepalgunj. (5 star hotel)*
3. *Nepalgunj to Simikot and Simikot to Nepalgunj transfer by domestic flight.*
4. *Simikot to Hilsa and Hilsa to Simikot transfer by helicopter.*
5. *Best available hotel or guest house accommodation in the Tibetan side.*
6. *All meals (Pure Vegetarian) are included as mentioned in the itinerary.*
7. *Private transportation by luxury A/C coach from Hilsa to Hilsa. (Tibet Side)*
8. *A support truck to carry kitchen equipment and baggage.*
9. *Our Nepali team leader and supporting Kitchen team. (Cooks, Helpers and Sherpas)*
10. *An English-speaking Tibetan guide.*

11. *Tibetan visa for Indian nationals.*
12. *Permit fee of Nepali guide and supporting Kitchen team. (Cooks, Helpers and Sherpas)*
13. *Humla restriction area entry permit.*
14. *Oxygen cylinders for emergency use and well equipped medical kit bags.*
15. *One duffle bag, one backpack and one down jacket as a gift from our company.*
16. *Kailash yatra completion certificate. (at the end in Nepalgunj)*
17. *All applicable taxes and service charges.*

---

### **Package Cost Excludes:**

1. *Personal expenses.*
  2. *Food and transport in case of any delay due to weather or unforeseen reason.*
  3. *If pilgrims want to leave the group early from the Tibet side for non – disease reasons then USD 100 per person per day has to be paid as penalty to the Tibet side – T.A.R. Foreign Exchange Center (FEC). (Visa splitting charge, accommodation, transportation charges will be extra)*
  4. *Pony/Horse or Porter hire cost ( Approx 3500 to 4000 Yuan) during the Kailash Parikrama.*
  5. *Emergency evacuation cost. (If needed)*
  6. *Travel insurance and expenses of personal nature etc. (highly recommended)*
  7. *Any international flight tickets.*
  8. *Service that isn't mentioned above.*
-



# INNOVATRIP VOYAGES PRIVATE LIMITED

7/24, DPP Road, Naktala, Near - Naktala Sriguru Ashram  
Kolkata - 700 047, India 

## How do I book this tour?

If you are interested in joining one of our Kailash Mansarovar Yatra group departures please follow the process mentioned below:

**STEP 1:** Please check the availability of travel dates and seats with us which is below with the cost table. Or directly contact our travel consultant and we will provide all needful information regarding the Kailash Mansarovar Yatra by helicopter.

**STEP 2:** Upon finalizing your dates and other information with our office, please send a scanned copy of your passport via email at [sanjib@innovatriveoyages.com](mailto:sanjib@innovatriveoyages.com) and [ops@innovatriveoyages.com](mailto:ops@innovatriveoyages.com) (Please note the passport must be valid for a minimum of 6 months from the date of yatra)

**STEP 3:** Now you can confirm your booking, but to confirm a booking we need an advance payment of **INR 50,000 per person**. Once we receive your booking advance amount, we proceed with your placement in a group, reserve hotel and flights for you, and start your visa documentation processing.

Furthermore, the balance amount you have to pay 60 days prior to the tour departure, we won't be able to proceed with further needful arrangements if we don't receive your 100% payment at the above time period.

---

## What are the booking cancellation policies?

All notices of cancellation must be sent to our office in writing form (email us at [sanjib@innovatriveoyages.com](mailto:sanjib@innovatriveoyages.com) and [ops@innovatriveoyages.com](mailto:ops@innovatriveoyages.com) and verbal cancellations will not be accepted.



40 Days before trip departure	60% of Total Trip Cost
30 Days before trip departure	75% of Total Trip Cost
20 Days before trip departure	90% of Total Trip Cost
19 Days and less departure	100% of Total Trip Cost

## Important information that you should read:

### Indian Passport Holders

**Nepal portion** - Indian nationals do not require a passport or visa to travel to Nepal. A valid identity card (voter ID card) is acceptable by Nepal Immigration to give permission to Indian nationals for traveling in Nepal.



**China/Tibet portion** – A valid passport, visa and a special permit to visit the Kailash region is mandatory for Indian nationals willing to undertake the yatra.

### Travel Insurance

It is very recommended and required to have a valid Travel Insurance that covers the Kailash region. Our excursions do not cover the cost of travel insurance. It is the pilgrim/traveler's personal duty to ensure that they



have sufficient insurance for the entire duration of the journey.

## Medical Certificate

We don't require a valid copy of the health certificate but it would be good if the pilgrims consults with his/her physician mentioning that the pilgrim/traveler is in perfect condition to undertake the yatra to Mount Kailash at a height of above 15000 feet. Medical certificates are not our responsibility and we do not take any liability for any health issue.

FIT-TO-FLY  
CERTIFICATE

## Clothing

Casualwear and comfortable walking shoes are recommended to travel to Tibet. Be sure to bring warm clothing as nights and early mornings can be quite chilly to downright cold. Indian woman Pilgrims are strictly advised not to wear Sari as it will be difficult during the parikrama. Bring all the film, medicine, cosmetics, personal toiletries etc. that you will need from home as these are difficult or impossible to get on the way. A small first aid kit is also a good idea. Also, it's quite useful to have a route map to know where you are going and have been each day.



## What to take

Winterwear: Gore-Tex material though the good quality is highly recommended. Down jacket, raincoat or windbreakers, thermal under wears, Jackets, warm trousers and woolen shirts (cotton will also do), warm sweaters, woolen gloves, sun hat, sunglass, comfortable shoes, light leather boots in case of snow, woolen balaclava ('monkey cap') and scarf/dust mask to protect your eyes and nose from dust.



## Bring with you

Snacks along the way. Chocolates, dry fruit, toffees, glucose; 'namkeen' etc. Strong water bottles & water purifying tablets are important. Personal medical kit and Diamox tablet (for high altitude). Sunglasses (to protect your eyes from UV, which is especially strong in high altitudes). Sunblock or sunscreen lotion, wet tissues (Fresh-ones are excellent to wipe off the dust), clothes-line/clips, needle & threaded-spray (handy for smelly boots/feet and for a round of spray in the toilet tent!), toilet paper, torch & spare batteries, daypack (small shoulder bag), Camera & films, Binocular.





## Health

This road trip is considered to be one of the most challenging at high altitudes on the planet. Your physical fitness is a requirement. In general, those suffering from asthma and cardiovascular conditions encounter difficulties in adapting to high elevations. It is crucial that you get a medical examination by your doctor to assess your health status and determine your capacity to handle the demanding journey at high altitudes, in harsh weather conditions, with no roads, intense cold, dust, and hiking up to an altitude of 19500 ft during the Parikrama.

## Altitude Sickness

When travelling in elevated areas, it is probable that you will encounter symptoms and discomfort associated with altitude sickness, such as headache, decreased appetite, nausea, fatigue, insomnia, and shortness of breath, until your body adapts to the higher altitude. The duration of this process can vary, ranging from a few days to perhaps longer, contingent upon the specific circumstances of each individual. Due to this sole reason, we have implemented a requirement for a minimum stay of 2 nights at Taklakot before proceeding to the elevated regions. Stay hydrated by consuming ample amounts of water, maintain a state of tranquility, and engage in breathing exercises. Avoid consuming alcohol or smoking before and during the tour. We advise you to bring a supply of Diamox tablets as a precautionary measure against altitude sickness. Please seek advice from your physician regarding the appropriate dosage.

### Symptoms of Altitude Sickness



- Headache, nausea and vomiting
- Dizziness and light headedness
- Appetite loss
- Fatigue or exhaustion
- Difficulty breathing

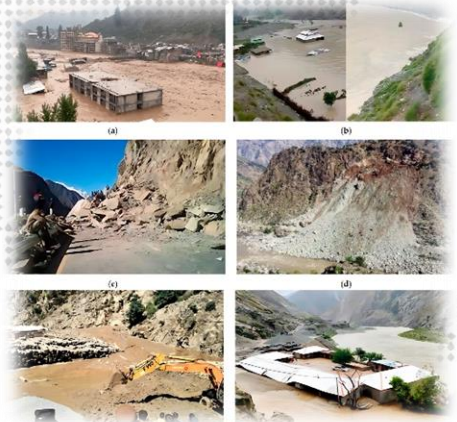
## Currency

The unit of Chinese currency is Yuan. USD 1 = 7.10 Yuan.  
1 Yuan = INR 12.00 approx. Money can be exchanged on  
the Nepal Tibet Border. You can re-exchange all your  
remaining Yuan at the end of the trip at the  
border itself before re-entering Nepal.



## Risks and Liability

Innovatrip Voyages Pvt.Ltd and its associates will put  
every effort to make your journey smooth and  
pleasant. However, all the tours in Tibet  
are conducted strictly under the rules  
& regulations of the Tibet Tourism Bureau (TTB).  
Therefore, Indomed Travels Pvt. Ltd and its  
counterpart shall not be responsible for any change  
and alteration in the program due to unavoidable  
circumstances such as landslides, road blockage,  
flood, snow, political unrest, cancellation of  
flight, delayed arrival, delayed issue of permit and  
visa, sickness or accidents. Any extra cost incurred  
thereof shall be borne by the clients on the spot.



## Additional Important Information for Heli trip to Kailash Manasarovar Yatra

Based on our experience and reactions of the pilgrims who have travelled with us before, we are hereby, communicating to you again about such unpredictable climatic disturbances in helicopter trips to Kailash. We operate trips in regular flights between these stations and the trip is dependent on the operation of those regular flights/helicopter trips. However, we will provide information on additional expenses incurred during the trip in unforeseen situations.



## Know about Nepalgunj

This town is located along the India-Nepal border, approximately 200 km away from Lucknow. It boasts a greater number of amenities and improved infrastructure. Exclusively from this location, all flights to Simikot originate. Nepalgunj and Simikot are not linked by a road network, hence air travel is the sole available choice. Local airlines operate small aircraft for flights between Nepalgunj and Simikot. Even during minor climatic disruptions, these flights may be postponed or cancelled due to safety concerns, solely at the discretion of local authorities and airline operators. We are not responsible for any delays and/or cancellations.





## Know about Simikot

Simikot is a very small hill settlement in Nepal and a point of air connection between Hilsa and Nepalgunj. Simikot is a better place in terms of living climatic conditions and service standards, as compared to Hilsa. The flight connectivity between Nepalgunj to Simikot and Simikot to Hilsa is totally dependent on weather conditions, which are beyond our control. In the event of climatic problems, flight cancellations, flight delays or any other unforeseen situation our team will help you in managing accommodation, food and other services which will be on a direct payment basis.




## Know about Hilsa

Hilsa is a deserted border town in Nepal, close to the China border from where pilgrims enter to visit Kailash Mansarovar. In the event when the pilgrims get stuck at Hilsa due to climatic conditions, flight delays etc the facilities of accommodation, food, medical etc are very limited. Longer delays are also expected in rare cases as faced in many trips. Managing with the best available resources is the only option we get at Hilsa and discomfort is very obvious at this place especially if the halt gets longer than





# INNOVATRIP VOYAGES PRIVATE LIMITED

7/24, DPP Road, Naktala, Near - Naktala Sriguru Ashram  
Kolkata - 700 047, India 

expected. The accommodation at Hilsa is backcountry style and available food will be very basic (rice, noodles, soup, local water etc).

The unpredictable weather conditions and other limitations with the flights operating between these sectors mentioned above sometimes cause short or long delays in onward and/or return journey to/from Kailash Manasarovar, making the situation a little tough and we only can wait for our turn to get the flight to the next destination.

Innovatrip Voyages Pvt Ltd wishes you a happy and comfortable journey !!!



  
INNOVATRIP VOYAGES PVT LTD  
PASSPORT TO HAPPINESS

*Sanjib Kr Banerji*

**MANAGING DIRECTOR**

 +91 9051369296

 sanjib@innovatripvoyages.com

 7/24 DPP Road, Naktala, Kolkata  
700047

 [www.innovatripvoyages.com](http://www.innovatripvoyages.com)

Innovatrip Voyages Pvt Ltd